



Three Phase Smart Sinus Ups T112 / 10.000VA / 8.000W

- Pure Sine wave output
- Smart technology
- Wide input voltage operation range
- High quality device
- Long lifetime without reparation
- 5 year warranty

Purpose

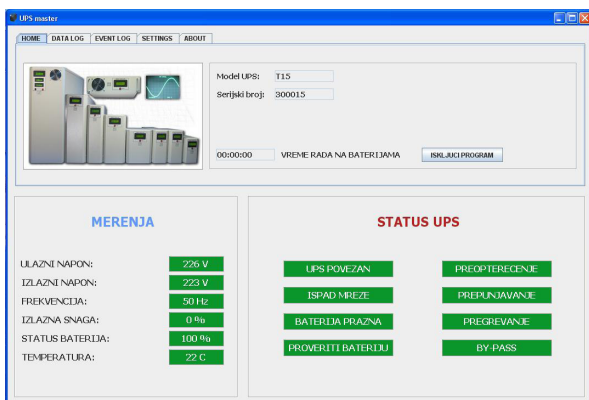


IT sector, offices, industry,
medical, server rooms...

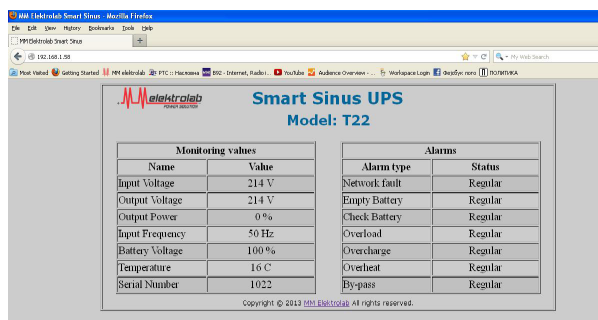
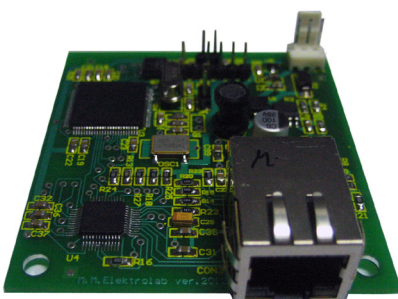


DESCRIPTION:

- Three phase Smart Sinus Ups is high quality device, generates a pure Sinusoidal voltage at the output 3 x 230V~ +/-5% (3 x 380V~).
- Carefully selected high quality components from well-known manufacturers.
- Long life -UPS life without repairs over 15 years (not applicable for batteries).
- Lots of quality protections.
- Saving event+log alarms in real time.
- Unique concept of Service Support, the purchase of our UPS devices gives you special software through which our product is directly connected via the Internet to the service mail of our company.
- Advanced UPS monitoring software that has the unique concept of generating its own local area network between a UPS device and one or more computers / servers.
- In situations where the mains voltage disappears and the battery is discharged or any alarms occur, UPS before shutting down, executes at the same time shutting down operating systems on all computers / servers, then the UPS device shuts off. In the event of a power failure or any alarm, the UPS sends alerts on monitors of all computers.



- An option of installing a LAN card with SNMP and HTTP protocols, which allows real-time monitoring of UPS devices anywhere in the country and abroad.

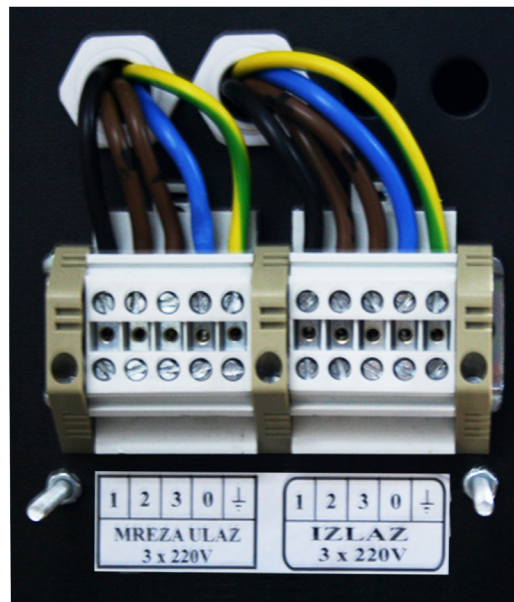


TECHNICAL DATA:

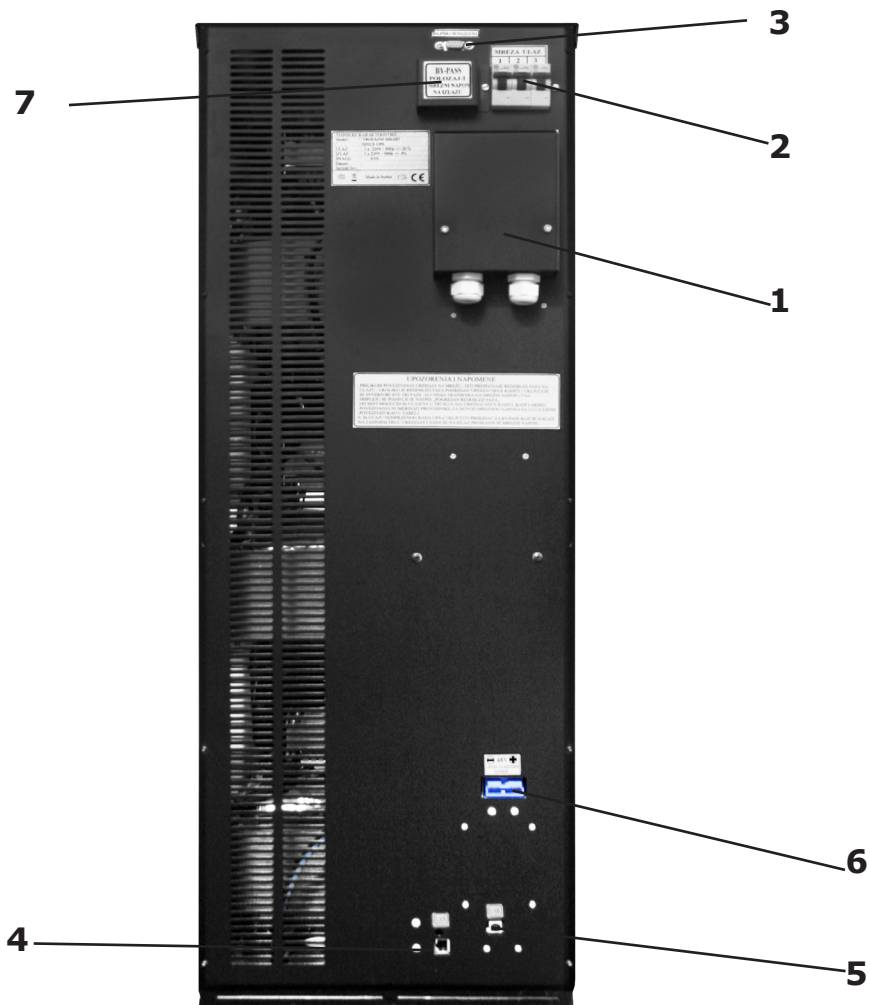
MODEL:	T112
Power:	10.000 VA /8.000 W
INPUT:	
Nominal Voltage:	3 x 220V ac (175V - 265V)
Connection:	Connection: Hardwire 5-wire (3ph+N+G)
Frequency:	50Hz +/- 5 %
OUTPUT:	
Connection:	Hardwire 5-wire (3ph+N+G)
Nominal Voltage:	3 x 230V +/- 5%
Wave form:	Pure Sine wave
Frequency:	50Hz +/- 0,01%
Transfer time:	0 msec
By-pass:	YES, automatically + Manual switch
Efficiency:	92% (Load=100%)
Topology:	Double conversion
PROTECTIONS:	
Protections::	Short circuit at the output / Overload / Overcharge batteries / Deep batteries discharge / Overvoltage-Undervoltage on the UPS Input / Overvoltage-Undervoltage on the UPS Output / Overheating.
INDICATOR:	
Signaling:	Audible, 4 x relay contacts.
Front panel:	Alfa-numeric display 4x20 character with back light, measurement: -Input/Output voltage,Input frequency, Batteries voltage (V), Charging / Discharging battery %,Output power (VA/%), Work time on batteries,Ups status,Log alarm. -Button On-Off
BATTERIES:	
Battery number and model:	12V / 100Ah x 4 pcs (48V)
Expanding work autonomy:	Yes (48V)
Charging time:	6-8h
Autonomy:	13 minutes / 100% output power

COMMUNICATION:	
Communication:	USB / LAN hardware (+Software)
SAFETY STANDARDS:	
LVD conformity :	EN 60950
EMC conformity:	EN 62040-2:2006
DIMENSIONS:	
Height:	102 cm
Widht:	35 cm
Depth:	69 cm
GENERAL:	
Voltage distortion:	<3%
Operating temperature range:	-20°C to +65°C
IP class:	IP 21
Safety mark:	CE
Weight:	192 kg
WARRANTY:	
Warranty:	Ups 5 years / Battery 2 years

HARDWIRE CONNECTION:



REAR SIDE:



- 1. Power cord 220 VAC
- 2. Power fuse
- 3. Connection for signal
- 4. LAN communication
- 5. USB communication
- 6. Connector for external batteries
- 7. BY-PASS